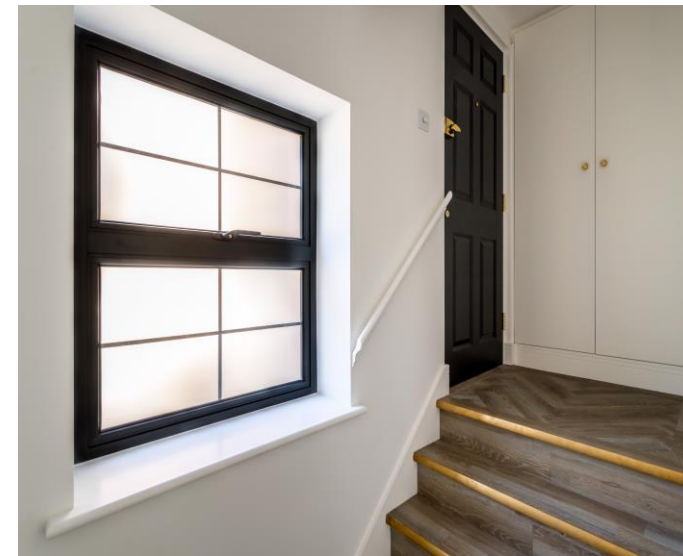





HENLEY HOMES

Flat 4, Field View | Cheam Road
Cheam | Surrey SM2 7LQ |



MJH Developments and Henley Homes Estate Agent are pleased to launch Flat 4 Field View, a stylish two bedroomed luxury apartment situated in the leafy suburb of Cheam. Located on the first floor with French doors leading onto its own balcony. With underfloor heating throughout, this ultra modern and bright apartment has a spacious open plan kitchen with top of the range NEFF integrated appliances and a hot water tap. Both bedrooms have luxury shower en-suites. Field View is conveniently situated within walking distance to both Cheam and East Ewell train stations offering direct services to London Bridge and London Victoria. Road access to A3 is less than 4 miles away Ewell East station is just 10 min walk 0.6 miles, London Victoria is 40 mins from Ewell East station, Cheam Village is 1.2 miles away and Ewell Village is 1 mile away.

Kitchen / Sitting / Dining Room 22' 5" x 19' 2" (6.83m x 5.84m)

Front aspect, large bay window, integrated electric oven and microwave oven, washer/dryer, dishwasher and fridge/freezer. All appliances are NEFF. Induction hob with extractor fan, hot water tap, calcutta storm quartz worktop, high and low level storage, underfloor heating, luxury herringbone vinyl flooring.

Cloakroom

Wash hand basin on vanity unit, low level WC.

Balcony 10' 4" x 5' 6" (3.15m x 1.68m)

Front aspect.





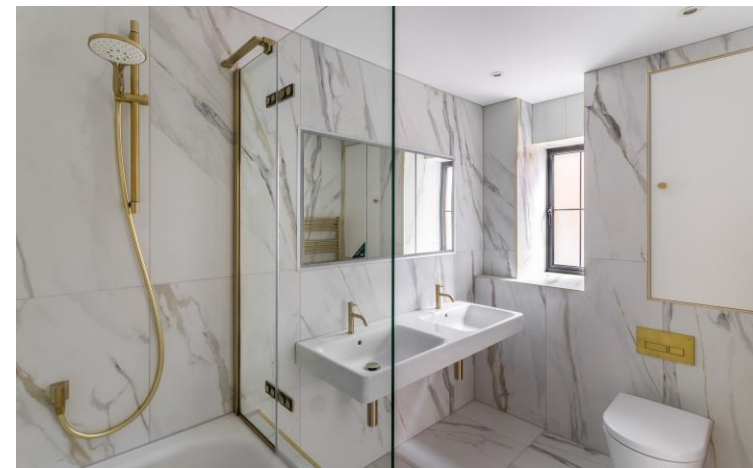
Bedroom 1 17' 0" x 10' 3" (5.18m x 3.12m)
Rear aspect, underfloor heating, luxury herringbone vinyl flooring.

En-suite
Rear aspect, porcelain tiled walls and floor, wall mounted double sink with brass mixer taps, recessed lit triple mirror cupboard, low level WC, large walk in shower with hand held shower attachment, heated towel rail, all bathroom fittings are gold/brass, underfloor heating.

Bedroom 2 12' 2" x 9' 6" (3.71m x 2.89m)
Rear aspect, underfloor heating, luxury herringbone vinyl flooring.

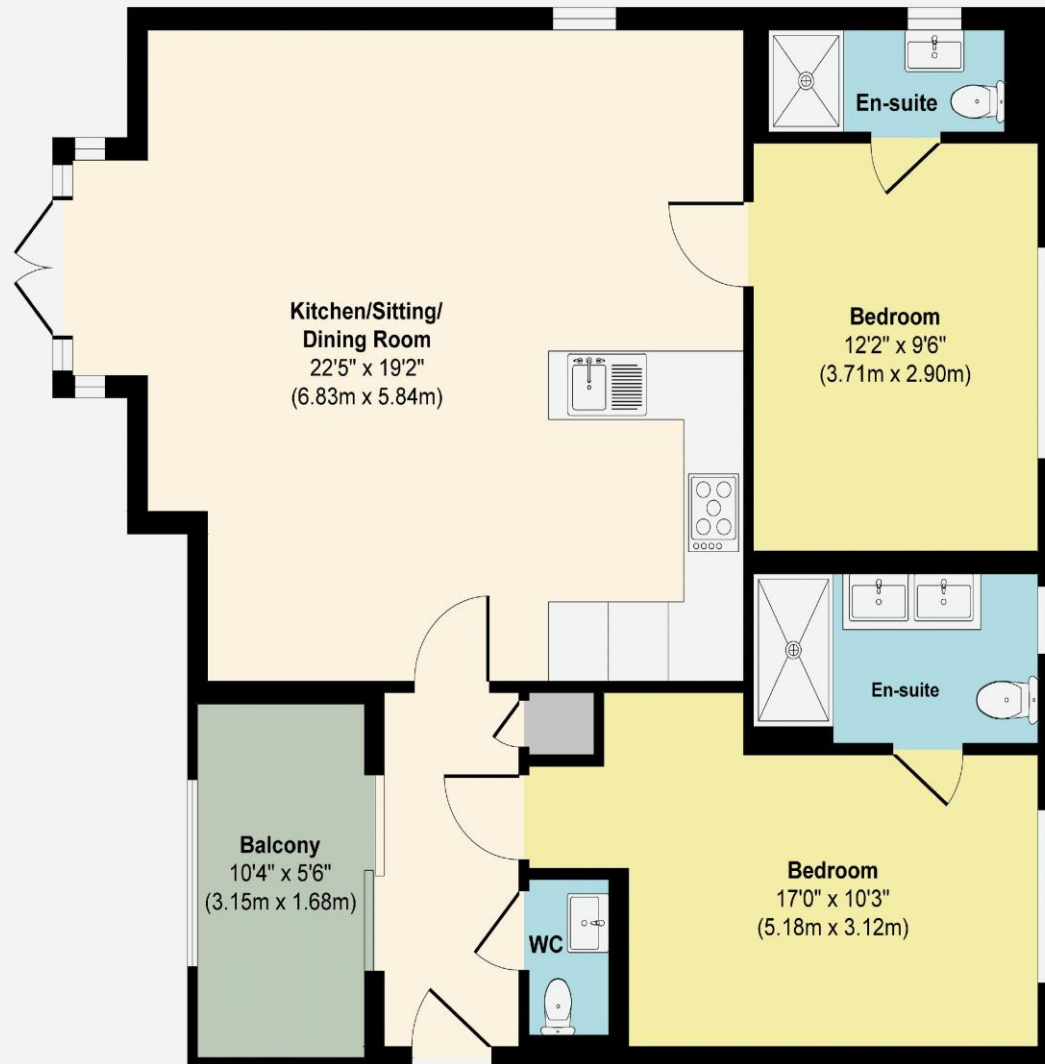
En-suite
Side aspect, porcelain tiled walls and floor, wall mounted sink with a mixer tap, recessed lit mirror cupboard, low level WC, walk in shower with wall mounted attachment and rainwater showerhead, heated towel rail, all bathroom fittings are gold/brass, underfloor heating.

All photographs and layout of the photographs are taken from Flat 3 our show flat.





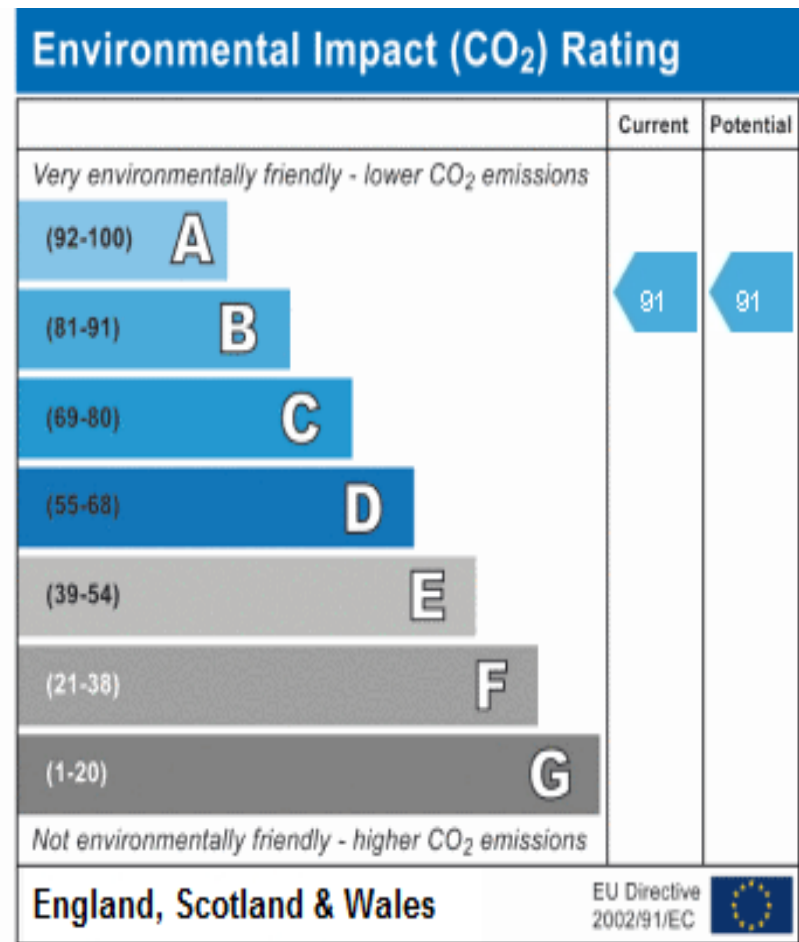
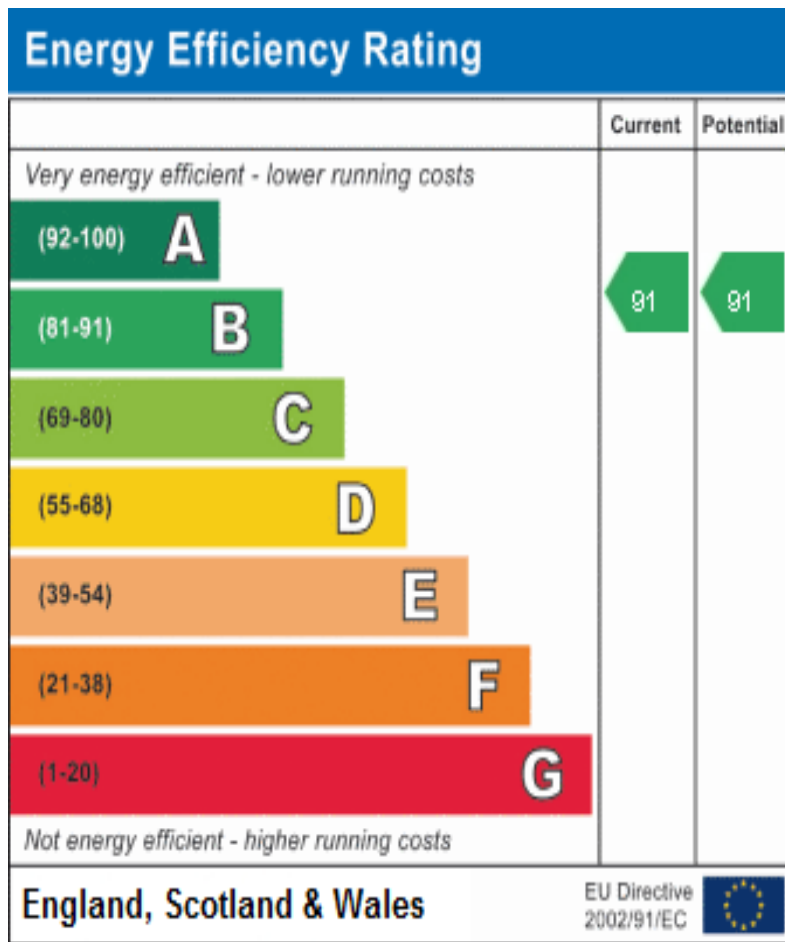
Flat 4 : Field View, SM2



First Floor
Approximate Floor Area
810 sq. ft
(75.25 sq. m)

Approx. Gross Internal Floor Area 810 sq. ft / 75.25 sq. m

Illustration for identification purposes only, measurements are approximate, not to scale.



These details are for guidance only and complete accuracy cannot be guaranteed. If there is at any point, which is of particular importance, verification should be obtained. They do not constitute a contract or part of a contract. All measurements are approximate. No guarantee can be given with regard to planning permissions or fitness for purpose. No apparatus, equipment, fixture or fitting has been tested. Items shown in photographs are NOT necessarily included. Interested Parties are advised to check availability and make an appointment to view before travelling to see a property.



HENLEY HOMES

0203 873 2700
 info@henleyhomes.agency | www.henleyhomes.agency